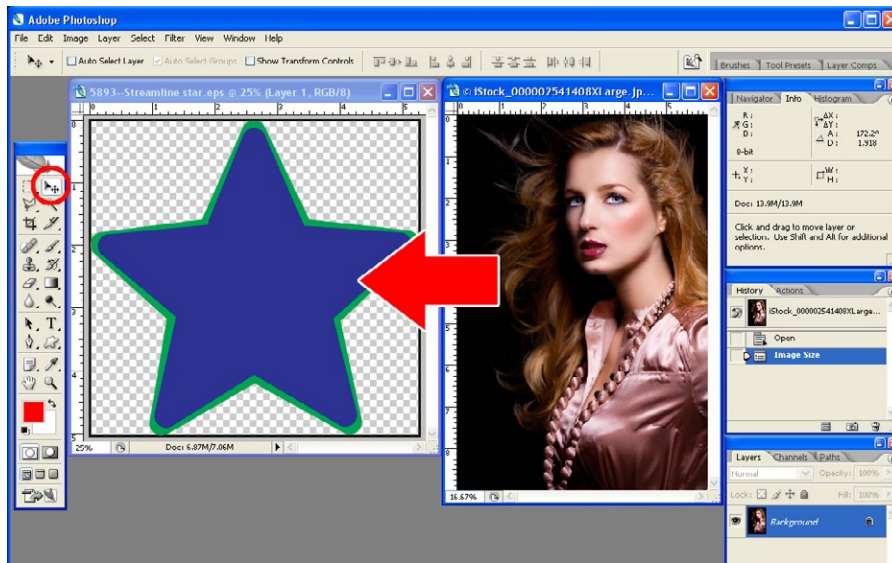


Using Unisub[®] Templates in Photoshop

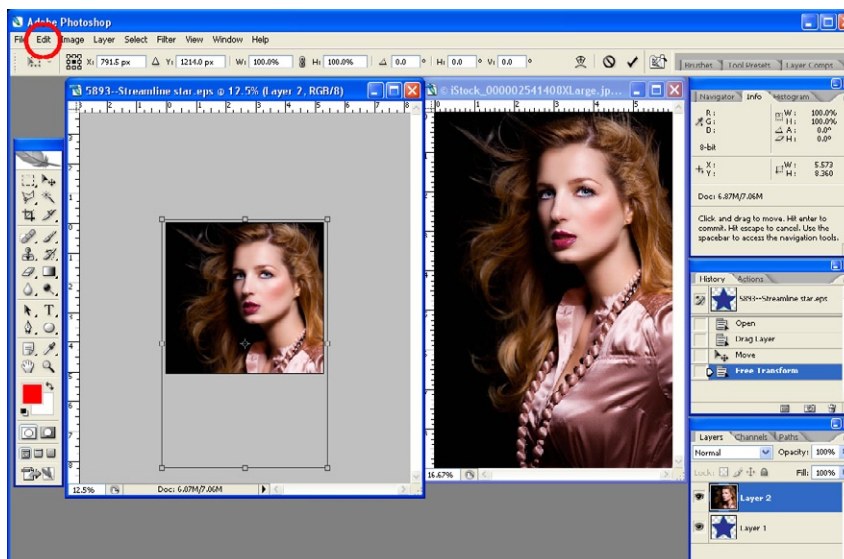
Step 1

Open both the template (do not change the size, but set the resolution to 250 or 300 dpi) and the image you want to put on it. Using the Move tool (circled below), simply click and drag the image over to the template (this will not work vice versa). Keep in mind that the image may be much larger than the template. This will be covered in the next step.



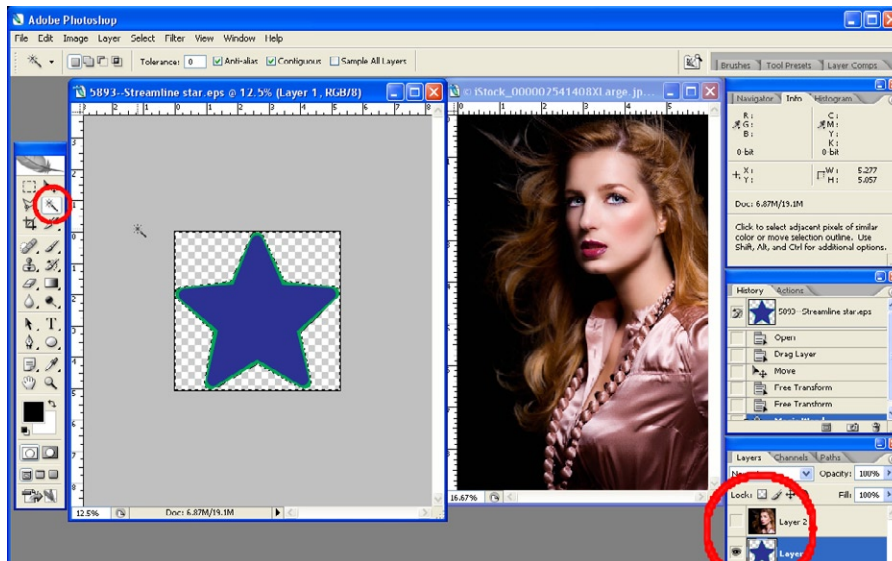
Step 2

The next step is to size the image to fit the template. Make sure that the layer with the image is selected in the Layers palette. Then go to Edit > Free Transform (shortcut key is Ctrl+T). You will see a box around the image with squares at the midpoint and corners (depending on the image size, you may have to zoom out to see the box). Click and drag one of the corners while holding the Shift key to size it proportionally. You can also use the move tool to move the image to where you would like it to be positioned. Once you are satisfied with the size, press Enter for the transformation to take effect.



Step 3

Make the image layer invisible by clicking the small eye icon next to its layer. Click on the template layer to activate it. Select the Magic Wand tool (circled below) and click anywhere on the checkered background. You will see a dotted line surrounding it and the outside border of the whole image. This area is now selected.



Step 4

Simply make the image layer visible again and click it to make it active. While the dotted lines are still moving around in the shape of the template, press the Backspace or Delete key to trim the image in the shape of the template.

